

## The Diagnosis and Management of Lipodystrophy Syndromes: A Multi-Society Practice Guideline

Rebecca J. Brown<sup>1,2</sup>, David Araujo-Vilar<sup>3</sup>, Pik To Cheung<sup>4</sup>, David Dunger<sup>5</sup>, Abhimanyu Garg<sup>6</sup>, Michelle Jack<sup>7</sup>, Lucy Mungai<sup>8</sup>, Elif A. Oral<sup>9</sup>, Nivedita Patni<sup>10</sup>, Kristina Rother<sup>2</sup>, Julia von Schnurbein<sup>11</sup>, Ekaterina Sorkina<sup>12</sup>, Takara Stanley<sup>13</sup>, Corinne Vigouroux<sup>14</sup>, Martin Wabitsch<sup>11</sup>, Rachel Williams<sup>15</sup>, Tohru Yorifuji<sup>16</sup>

<sup>1</sup> Committee Chair; all other authors appear in alphabetical order; <sup>2</sup> National Institute of Diabetes and Digestive and Kidney Diseases, National Institutes of Health, Bethesda, MD, USA; <sup>3</sup> Department of Medicine, University of Santiago de Compostela, Spain; <sup>4</sup> Department of Paediatrics and Adolescent Medicine, The University of Hong Kong; <sup>5</sup> Department of Paediatrics, University of Cambridge Box 116 Level 8, Cambridge Biomedical Campus, Cambridge CB2 0QQ, MRC Wellcome Trust MRC Institute of Metabolic Science, NIHR Cambridge Comprehensive Biomedical Research Centre, UK, MRC Epidemiology Unit, University of Cambridge; <sup>6</sup> Division of Nutrition and Metabolic Diseases, Department of Internal Medicine and the Center for Human Nutrition, UT Southwestern Medical Center, Dallas, TX, USA; <sup>7</sup> Royal N Shore Hospital, Northern Clinical School, University of Sydney St Leonards NSW 2126; <sup>8</sup> Department of Paediatrics and Child Health, University of Nairobi, Kenya; <sup>9</sup> Brehm Center for Diabetes and Division of Metabolism, Endocrinology, and Diabetes; Department of Internal Medicine; University of Michigan Medical School and Health Systems, Ann Arbor, USA; <sup>10</sup> Division of Pediatric Endocrinology, Department of Pediatrics, UT Southwestern Medical Center, Dallas, TX, USA; <sup>11</sup> Division of Pediatric Endocrinology and Diabetes, Department of Pediatrics and Adolescent Medicine, University of Ulm, Eythstr. 24 / 89075 Ulm, Germany; <sup>12</sup> Clamp technologies laboratory, Endocrinology Research Center, and Laboratory of Molecular Endocrinology of Medical Scientific Educational Centre of Lomonosov Moscow State University Moscow, Russia; <sup>13</sup> Pediatric Endocrine Unit and Program in Nutritional Metabolism, MA General Hospital and Harvard Medical School, Boston, MA, USA; <sup>14</sup> Sorbonne Universities, UPMC Univ Paris 6, Inserm UMR5 938, St-Antoine Research Center, Institute of Cardiometabolism and Nutrition (ICAN), AP-HP, St-Antoine Hospital, Molecular Biology and Genetics Department, Paris, France; <sup>15</sup> Department of Paediatric Endocrinology, Cambridge University Hospitals NHS Trust, Hills Rd, Cambridge, United Kingdom; <sup>16</sup> Division of Pediatric Endocrinology and Metabolism, Children's Medical Center, Osaka City General Hospital, Japan

**Objective:** Lipodystrophy syndromes are extremely rare disorders of deficient body fat associated with potentially serious metabolic complications, including diabetes, hypertriglyceridemia, and steatohepatitis. Due to their rarity, most clinicians are not familiar with their diagnosis and management. This practice guideline summarizes diagnosis and management of lipodystrophy syndromes not associated with HIV or injectable drugs.

**Participants:** Seventeen participants were nominated by worldwide endocrine societies or selected by the committee as content experts. Funding was via unrestricted educational grant (Astra Zeneca) to the Pediatric Endocrine Society. Meetings were not open to the general public.

**Evidence:** Literature review was conducted by the committee. Recommendations of the committee were graded using the system of the American Heart Association. Expert opinion was used when published data were not available or scarce.

**Consensus Process:** The guideline was drafted by committee members, and reviewed, revised, and approved by the entire committee during group meetings. Contributing societies reviewed the document and provided approval.

ISSN Print 0021-972X ISSN Online 1945-7197

Printed in USA

Copyright © 2016 by the Endocrine Society

Received June 23, 2016. Accepted September 14, 2016.

Abbreviations:

**Conclusions:** Lipodystrophy syndromes are heterogeneous, and are diagnosed by clinical phenotype, supplemented by genetic testing in certain forms. Patients with most lipodystrophy syndromes should be screened for diabetes, dyslipidemia, and liver, kidney, and heart disease annually. Diet is essential for management of metabolic complications of lipodystrophy. Metreleptin therapy is effective for metabolic complications in hypoleptinemic patients with generalized lipodystrophy, and selected patients with partial lipodystrophy. Other treatments not specific for lipodystrophy may be helpful as well (e.g. metformin for diabetes, statins or fibrates for hyperlipidemia). Oral estrogens are contraindicated.

The lipodystrophy syndromes are a heterogeneous group of rare disorders that have in common selective deficiency of adipose tissue in the absence of nutritional deprivation or catabolic state (Figure 1). Lipodystrophies are categorized based on etiology (genetic or acquired) and distribution of lost adipose tissue, affecting the entire body (generalized) or only regions (partial). This yields four major categories: congenital generalized lipodystrophy (CGL), familial partial lipodystrophy (FPLD), acquired generalized lipodystrophy (AGL), and acquired partial lipodystrophy (APL) (Figure 1). Additional subtypes include progeroid disorders, autoinflammatory disorders, and others (Table 1). This practice guideline will not discuss lipodystrophy in HIV infected patients or localized lipodystrophy (eg, from injectable drugs).

Lipodystrophy syndromes are frequently associated with hormonal and metabolic derangements resulting in severe comorbidities (Table 2) that depend on the subtype, extent of fat loss, age, and gender. Many complications of lipodystrophy are secondary to deficient adipose mass, resulting in ectopic lipid storage in the liver, muscle, and other organs, causing insulin resistance. Insulin resistance leads to diabetes, hypertriglyceridemia, polycystic ovarian syndrome (PCOS), and nonalcoholic fatty liver disease (NAFLD) (1).

Major causes of mortality include heart disease (cardiomyopathy, heart failure, myocardial infarction (MI), arrhythmia) (2–5), liver disease (liver failure, gastrointestinal (GI) hemorrhage, hepatocellular carcinoma) (6, 7), kidney failure (6), acute pancreatitis (7), and sepsis.

Due to the rarity of lipodystrophy syndromes, many clinicians are unfamiliar with their diagnosis and management. In December 2015, an expert panel including representatives from endocrine societies around the world convened to generate this practice guideline. Evidence was rated using the system of the American Heart Association (Supplemental Table 1) (8). Details of the literature review, consensus and endorsement process are in the Supplemental Data.

## Overview of lipodystrophy syndromes

This section reviews major categories of lipodystrophy. Details on individual subtypes are in Supplemental Table 2.

### Congenital Generalized Lipodystrophy (Berardinelli-Seip Syndrome)

CGL is an autosomal recessive disorder characterized by near-complete lack of fat starting at birth or infancy, prominent muscles, phlebomegaly, acanthosis nigricans, hepatomegaly, umbilical prominence, and voracious appetite in childhood (9, 10). Multiple genetic causes have been identified, each with unique clinical features (11–13). Metabolic complications are frequent and may be severe. Cardiomyopathy or rhythm disturbances may occur.

### Familial Partial Lipodystrophy

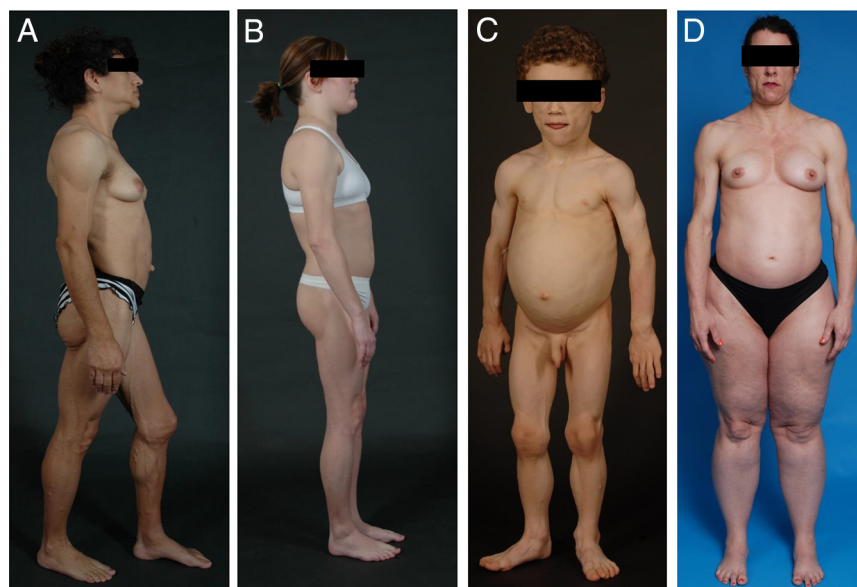
FPLD is a group of usually autosomal dominant disorders characterized by loss of fat affecting the limbs, buttocks, and hips (10). Regional excess fat accumulation is frequent, varies by subtype, and may result in a Cushingoid appearance. Fat distribution is typically normal in early childhood, with loss of fat occurring around puberty. Muscular hypertrophy is common. Metabolic complications are common in adulthood (14), with increased risk of coronary heart disease (CHD) (15) and occasionally early cardiomyopathy.

### Acquired Generalized Lipodystrophy (Lawrence syndrome)

AGL is more common in females (F:M; 3:1), and appears usually before adolescence (but may develop at any time in life) with progressive loss of fat affecting the whole body including palms and soles (4). Some fat accumulation can appear in the face, neck or axillae. Metabolic complications are frequent and may be severe. AGL is often associated with autoimmune diseases (4, 16).

### Acquired Partial Lipodystrophy (Barraquer-Simons syndrome)

APL is more frequent in females (F:M; 4:1) and usually begins in childhood or adolescence. Loss of fat follows a cranio-caudal trend, progressively affecting the face, neck, shoulders, arms, and trunk. Fat accumulation can appear in the hips, buttocks and legs (17). APL is associated with autoimmune diseases, especially membranoproliferative glomerulonephritis (MPGN) in ~20% (17). Most patients have low serum complement 3 levels, and some have



**Figure 1. Physical appearance of patients with the four main subtypes of lipodystrophy syndromes** A. Lateral view of a 33-year-old Hispanic female with congenital generalized lipodystrophy (also known as Berardinelli-Seip congenital lipodystrophy), type 1 due to homozygous c.589–2A>G; p.(Val197Glufs\*32) in *AGPAT2* gene. The patient had generalized loss of subcutaneous fat with acanthosis nigricans in the axillae and neck. She has umbilical prominence and acromegaloid features (enlarged mandible, hands and feet). B. Lateral view of a 26-year old female with familial partial lipodystrophy of the Dunnigan variety due to heterozygous c.575A>T; p.(Asp192Val) mutation in *LMNA* gene. She had marked loss of subcutaneous fat from the upper and lower extremities and accumulation of subcutaneous fat in the face and chin. C. Anterior view of an 8-year-old German boy with acquired generalized lipodystrophy. He had severe generalized loss of subcutaneous fat with marked acanthosis nigricans in the neck, axillae and groin. D. Anterior view of a 45-year-old Caucasian female with acquired partial lipodystrophy (Barraquer-Simons syndrome). She had marked loss of subcutaneous fat from the face, neck, upper extremities, and chest and but had lipodystrophy on localized regions on anterior thighs. She had increased subcutaneous fat deposition in the lower extremities.

presence of C3 nephritic factor. Metabolic complications are uncommon (17).

## DIAGNOSIS OF LIPODYSTROPHY

Diagnosis of lipodystrophy is based on history, physical examination, body composition, and metabolic status. (Class I, Level B)

There are no defined serum leptin levels that establish or rule out the diagnosis of lipodystrophy. (Class IIa, Level C)

Confirmatory genetic testing is helpful in suspected familial lipodystrophies. (Class I, Level A)

Genetic testing should be considered in at-risk family members. (Class IIa, Level C)

Serum complement levels and autoantibodies may support diagnosis of acquired lipodystrophy syndromes. (Class IIa, Level B)

Firm diagnostic criteria for lipodystrophy have not been established. Figure 2 shows a suggested diagnostic approach.

## Establishing the presence of lipodystrophy

Lipodystrophy should be suspected in patients with regional or generalized lack of adipose tissue outside of the normal range by physical examination, which can be supported by anthropometry, dual energy X-ray absorptiometry (DXA), and whole-body magnetic resonance imaging (MRI) (Supplemental Table 3) (18). Recognizing loss of subcutaneous fat is particularly challenging in partial lipodystrophy and especially in men, in whom low body fat overlaps with normal variation, and metabolic manifestations of lipodystrophy are less severe. In both genetic and acquired lipodystrophies, loss of fat may be gradual, delaying diagnosis.

Physical, historical, and comorbid features that increase the suspicion of lipodystrophy (18) are in Table 3.

Because serum leptin assays are not standardized and leptin concentrations in patients with lipodystrophy (especially partial forms) overlap the general population, leptin levels do not help in diagnosis, but may help with choice of therapies.

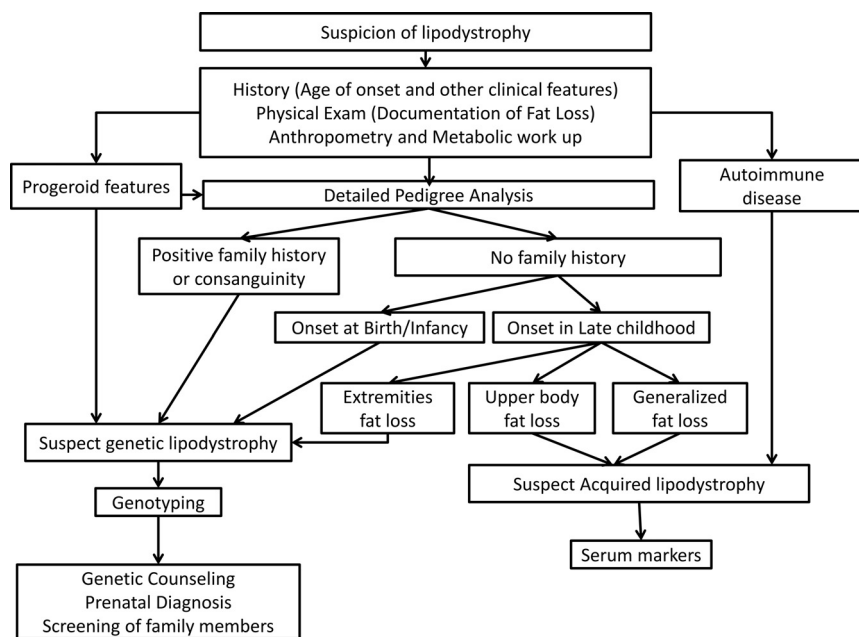
## Differential Diagnosis

Differential diagnosis should include conditions presenting with severe weight loss (malnutrition, anorexia nervosa, uncontrolled diabetes mellitus, thyrotoxicosis, adrenocortical insufficiency, cancer cachexia, HIV-associated wasting, chronic infections). Especially difficult is differentiating lipodystrophy from uncontrolled diabetes, as both may have extreme hypertriglyceridemia. However, restoring glycemic control in patients with nonlipodystrophic diabetes leads to regain of body fat. Generalized lipodystrophies can be confused with mutations of the insulin receptor or acromegaly/gigantism, and FPLD with Cushing's syndrome, truncal obesity, and multiple symmetric lipomatosis.

## Establishing the subtype of lipodystrophy

### Pattern of fat loss

Although the pattern of body fat loss in patients with a particular subtype of genetic lipodystrophy is quite char-



**Figure 2. Diagnostic approach to lipodystrophy syndromes** Lipodystrophy should be suspected in patients with regional or generalized lack of adipose tissue. History should assess age of onset of fat loss and comorbidities. Physical examination should determine distribution of subcutaneous fat loss and presence of prominent muscles, phlebomegaly, acanthosis nigricans, hepatomegaly, xanthomas, and acromegaloid or progeroid appearance. All patients should undergo metabolic work up for insulin resistance, diabetes, dyslipidemia and fatty liver disease. Conventional anthropometry including skinfold thickness measurements,  $\pm$  DXA and whole body MRI (if available) should be performed to confirm the pattern of fat loss. Common genetic lipodystrophies include congenital generalized lipodystrophy (CGL), familial partial lipodystrophy (FPLD) and progeroid lipodystrophies. They require genotyping to confirm the diagnosis followed by genetic counseling and screening of family members. Patients with progeroid lipodystrophies have progeroid features like bird like facies, high-pitched voice, skin atrophy and pigmentation, alopecia and nail dysplasia. Patients with FPLD have fat loss of the extremities typically occurring around puberty and can have positive family history. Patients with CGL have near-complete lack of fat starting at birth or infancy. Acquired lipodystrophies have fat loss typically in late childhood. Patients with acquired generalized lipodystrophy (AGL) have generalized loss of subcutaneous fat and often have associated autoimmune diseases. Patients with acquired partial lipodystrophy (APL) have cranio-caudal fat loss affecting the face, neck, shoulders, arms, and upper trunk and most patients have low serum complement 3 levels.

acteristic, heterogeneity occurs in the onset, severity, and pattern of fat loss, even within families.

### Distinguishing genetic from acquired lipodystrophy

Pedigree analysis can suggest genetic vs acquired lipodystrophy. Review of photographs from infancy may distinguish CGL from AGL, as infants typically show absent fat in CGL, and normal fat in AGL. However, there have been cases of AGL with loss of fat during the first few months of life (4). Patients with AGL lack family history, but can be confused with any type of genetic lipodystrophy, especially de novo mutations.

The presence of autoimmune diseases (myositis, type 1 diabetes, autoimmune hepatitis, and others) (4, 10, 16, 17, 19, 20) increases the suspicion of acquired lipodystrophy. In APL, low serum C3, C3NeF, proteinuria or biopsy-proven MPGN support the diagnosis.

### Genetic testing

Genotyping may include limited candidate gene sequencing, a panel of candidate genes, or whole exome/whole genome sequencing. The website, [www.genetests.org](http://www.genetests.org), lists clinical and research laboratories conducting genetic testing for lipodystrophy syndromes. Since there is strong evidence for additional loci for genetic lipodystrophies, negative tests do not rule out a genetic condition.

### Genetic counseling and screening of family members

Genetic counseling must take into consideration that current understanding of the natural history of genetic lipodystrophies is incomplete. In affected pedigrees, premarital counseling with genetic testing to detect carrier status can be considered.

Clinical diagnosis of lipodystrophy may be difficult in men (21), and some genotypes are associated with mild lipodystrophy phenotypes (22, 23). Genetic screening of family members may help identify individuals with subtle phenotypes. Genetic screening may be particularly important for families with specific *LMNA* mutations associated with cardiomyopathy and arrhythmia.

### SCREENING FOR

#### COMORBIDITIES

All patients should be screened for diabetes, dyslipidemia, NAFLD, cardiovascular, and reproductive dysfunction. Because patients with APL are at low risk for metabolic complications, clinical judgment should guide follow-up screening. Screening for comorbidities specific to individual lipodystrophy subtypes is not extensively discussed here.

#### Diabetes mellitus

**Diabetes screening should be performed annually.** (Class IIa, Level C)

Diabetes screening should follow the guidelines of the American Diabetes Association (fasting plasma glucose, oral glucose tolerance test (OGTT), or hemoglobin A1c). Patients with AGL may develop type 1 diabetes in addition to insulin resistance (24); measurement of auto-antibodies may clarify the diagnosis.

**Table 1.** Subtypes and inheritance of lipodystrophy

Inheritance Pattern	Subtype	Lipodystrophy Phenotype	Genes involved	References
Autosomal Recessive	Congenital Generalized Lipodystrophy	Near total absence of body fat Generalized muscularity Metabolic complications	<i>AGPAT2, BSCL2, CAV1, PTRF, PCYT1A, PPAR<math>\gamma</math></i>	(11,84–88)
	Progeroid Syndromes	Partial or generalized absence of body fat Progeroid features Variable metabolic complications	<i>LMNA, ZMPSTE24, SPRTN, WRN, BANF1</i>	(89–93)
	Familial Partial Lipodystrophy Autoinflammatory	Absence of fat in limbs Metabolic complications Variable absence of fat Variable metabolic complications	<i>CIDEA, LIPE, PCYT1A</i>  <i>PSMB8</i>	(87,92,94–96)  (97)
Autosomal Dominant	Familial Partial Lipodystrophy	Absence of fat from the limbs Metabolic complications	<i>LMNA, PPARG, AKT2, PLIN1</i>	(98–103)
	Progeroid Syndromes	Partial or generalized absence of body fat Progeroid features Variable metabolic complications	<i>LMNA, FBN1, CAV1, POLD1, KCNJ6</i>	(104–109)
	SHORT syndrome	Variable loss of body fat Metabolic complications	<i>PIK3R1</i>	(110)
Acquired	Acquired Generalized Lipodystrophy	Near total absence of body fat Metabolic complications	none	
	Acquired Partial Lipodystrophy	Absence of fat in upper body with increased fat in lower body Mild or no metabolic complications	none	(17)

### Dyslipidemia

Triglycerides should be measured at least annually, and with occurrence of abdominal pain or xanthomata. (Class I, Level C)

Fasting lipid panel (total cholesterol, low density lipoprotein [LDL]-cholesterol, high density lipoprotein [HDL]-cholesterol, triglycerides) should be measured at diagnosis and annually after age 10 years. (Class IIa, Level C)

### Liver disease

Alanine aminotransferase (ALT) and aspartate aminotransferase (AST) should be measured annually. (Class IIa, Level C)

Liver ultrasound should be performed at diagnosis, then as clinically indicated. (Class IIa, Level C)

Liver biopsy should be performed as clinically indicated. (Class IIa, Level C)

In addition to physical examination, ultrasound and elastography are useful to estimate liver and spleen size, severity of steatosis and fibrosis, and existence of portal hypertension. Patients with CGL2 are at high risk for early

cirrhosis, and those with AGL may have autoimmune hepatitis in addition to NAFLD (19).

### Reproductive dysfunction

Gonadal steroids, gonadotropins, and pelvic ultrasonography should be performed as clinically indicated. (Class IIa, Level C)

Pubertal staging should be performed annually in children. (Class IIa, Level C)

Early adrenarche, true precocious puberty, or central hypogonadism may occur in children with generalized lipodystrophy. Oligo/amenorrhea, decreased fertility, and PCOS are common in women.

### Cardiac disease

Blood pressure should be measured at least annually. (Class I, Level C)

ECG and echocardiogram should be performed annually in CGL and progeroid disorders, and at diagnosis and as clinically indicated in FPLD and AGL. (Class IIa, Level C)

Evaluation for ischemia and rhythm monitoring

should be considered in patients with progeroid disorders and FPLD2 with cardiomyopathy. (Class IIa, Level C)

Hypertension is common (25), even in children. In patients with CGL4, atypical progeroid syndromes, and FPLD2 due to *LMNA* mutations, cardiac abnormalities including ischemic heart disease, cardiomyopathy, arrhythmias, and sudden death are reported (3, 23, 26–33).

### Kidney disease

Urine protein should be measured annually using 24 hour urine collection or spot urine protein to creatinine ratio. (Class IIa, Level C)

Proteinuria is common (34). Kidney biopsy should be performed as clinically indicated, and pathology may include diabetic nephropathy, focal segmental glomerulosclerosis (especially in CGL) (34) or MPGN (especially in APL) (17).

### Malignancy

Lymphomas, particularly peripheral T-cell lymphoma, occur in AGL, with prevalence of ~7% (4, 35). Appropriate screening has not been established, but would reasonably include annual skin and lymph node examination. Generalized lipodystrophy has been reported as a paraneoplastic manifestation of pilocytic astrocytoma in three children who regained body fat following cancer therapy (36). Clinicians should consider screening for brain tumors in children who present with idiopathic AGL or atypical CGL. Specific progeroid syndromes (eg, Bloom and Werner syndrome) are associated with increased malignancy risk (Supplemental Table 2).

## TREATMENT OF LIPODYSTROPHY SYNDROMES

Current therapies prevent or ameliorate the comorbidities of lipodystrophy syndromes. There is no cure for lipodystrophy, and no treatment that can regrow adipose tissue.

### Diet

Most patients should follow diets with balanced macronutrient composition. (Class IIa, Level C)

Energy restricted diets improve metabolic abnormalities, and may be appropriate in adults. (Class I, Level C)

Very low fat diets should be used in chylomicronemia-induced acute pancreatitis. (Class I, Level C)

A dietician should be consulted for specialized dietary needs, especially in infants and young children. Overfeeding should be avoided. (Class IIa, Level C)

Medium chain triglyceride (MCT) oil formulas can provide energy and reduce triglycerides in infants. (Class IIa, Level C)

The cornerstone of therapy for metabolic complica-

tions of lipodystrophy is diet. Studies of specific diets in lipodystrophy are lacking, and recommendations rely on sparse literature and clinical experience.

Patients with lipodystrophy, especially generalized forms, are typically hyperphagic due to leptin deficiency. Energy-restricted diets in adolescents and adults lower triglycerides and glucose (37), but dietary restriction is challenging to achieve. Food restriction to control metabolic complications must be balanced by requirements for growth in children. Overfeeding to achieve normal weight may worsen metabolic complications and hepatic steatosis. Assessment of weight-for-length and body mass index (BMI) by comparison to reference growth data is not appropriate because body composition is atypical. Low weight-for-length or BMI is acceptable provided linear growth is maintained.

Patients should follow a 50%-60% carbohydrate, 20%-30% fat, and ~20% protein diet. Simple sugars should be restricted in preference for high-fiber complex carbohydrates, distributed evenly among meals and snacks and consumed in combination with protein or fat. Dietary fat should be primarily cis-mono-unsaturated fats and long chain omega-3 fatty acids. In extremely hypertriglyceridemic infants, MCT-based formula may help (38, 39). During acute pancreatitis, bowel rest followed by very low fat (<20 g) diet should be used.

### Exercise

Patients with lipodystrophy should be encouraged to exercise in the absence of specific contraindications. (Class IIa, Level C)

Patients with subtypes of lipodystrophy predisposed to cardiomyopathy should undergo cardiac evaluation prior to initiating an exercise regimen. (Class III, Level C)

Individuals with lipodystrophy engaged in intense exercise have amelioration of metabolic complications. Most patients should be encouraged to be physically active. However, strenuous exercise should be avoided in patients with cardiomyopathy. Contact sports should be avoided in patients with severe hepatosplenomegaly and CGL patients with lytic bone lesions.

### Meterleptin

In generalized lipodystrophy, meterleptin (with diet) is a first-line treatment for metabolic and endocrine abnormalities (Class I, Level B), and may be considered for prevention of these comorbidities in children. (Class IIb, Level C)

Meterleptin may be considered for hypoleptinemic (leptin < 4 ng/mL) patients with partial lipodystrophy and severe metabolic derangements (HbA1c > 8% and/or triglycerides > 500 mg/dL). (Class IIb, Level B)

Currently, meterleptin (recombinant human (rh) methionyl leptin) is the only drug approved specifically for lipodystrophy. It is approved in the US as an adjunct to diet for treatment of metabolic complications in patients with generalized lipodystrophy (<http://www.fda.gov/News-Events/Newsroom/PressAnnouncements/ucm387060.htm>). In Japan, it is approved for both generalized and partial lipodystrophy ([http://www.shionogi.co.jp/en/company/news/2013/pmrltj0000000ufd-att/e\\_130325.pdf](http://www.shionogi.co.jp/en/company/news/2013/pmrltj0000000ufd-att/e_130325.pdf)). It is available in other parts of the world (eg, Europe) through compassionate use programs. There is no age limit for initiation of meterleptin; children as young as six months have been treated. A dosing algorithm is provided in Supplemental Table 4 (40). Dose adjustments should be made in response to metabolic parameters and weight change, with clinical and laboratory assessment performed every 3–6 months.

### Meterleptin in Generalized Lipodystrophy

Meterleptin decreases hyperphagia (41–45), frequently leading to weight loss. Reduced food intake is at least partially responsible for many of the metabolic improvements. If excessive weight loss occurs, the dose of meterleptin should be reduced (Supplemental Table 4) (40).

Meterleptin markedly improved fasting glucose as early as the first week (42), and lowered HbA1c by 2% after one year (46). To reduce the risk of hypoglycemia, frequent glucose monitoring is recommended. Providers should consider reducing insulin doses by ~50% on initiation of meterleptin in patients with well-controlled diabetes. Many young patients with CGL are able to discontinue insulin (46).

Meterleptin lowered triglycerides within one week (42), reaching 60% reduction at one year (46). Meterleptin also decreased LDL- and total cholesterol, but did not change HDL-cholesterol (47, 48). Acute pancreatitis due to hypertriglyceridemia has occurred in patients who acutely discontinued or reduced meterleptin (47).

Meterleptin reduced hepatic steatosis, serum transaminases, and NASH scores within 6 to 12 months (42, 49–51). In one case, meterleptin ameliorated recurrence of severe hepatic steatosis after liver transplantation (52).

Meterleptin decreased proteinuria in most patients (34, 42). However, 4 patients had worsened renal disease during meterleptin treatment, so renal function should be monitored closely with preexisting renal disease (34).

In females, meterleptin normalized gonadotropin secretion, leading to normal progression of puberty, normalization of menstrual periods (42, 45, 53, 54), and improved fertility (1). Meterleptin decreased testosterone in women, but did not alter ovarian morphology (45, 53, 55). In males, meterleptin increased testosterone (45).

### Meterleptin in Partial Lipodystrophy

The response to meterleptin in partial lipodystrophy is less robust than in generalized lipodystrophy. In one study, meterleptin reduced hypertriglyceridemia and improved glycemia in severely hypoleptinemic patients with partial lipodystrophy and severe metabolic derangements (baseline HbA1c > 8%, triglycerides > 500 mg/dL, leptin < 4 ng/mL) (46). In a second study, meterleptin improved triglycerides and indices of insulin sensitivity and secretion in FPLD2 patients with moderate to severe hypoleptinemia (56). However, in a third study, no glycemic improvement was observed in FPLD2 patients with serum leptin < 7 ng/mL (57). Meterleptin is only available to

**Table 2.** Major comorbidities and complications of lipodystrophy

Complication	Affected subtypes	Reference
Hyperphagia	AGL, CGL, ±FPLD	(4,10 111)
Dyslipidemia (high triglycerides, low HDL-c, acute pancreatitis, eruptive xanthomas)	AGL, CGL, FPLD	(4,5,7,9,13,21,30)
Insulin resistance/diabetes, acanthosis nigricans (and diabetes complications)	AGL, CGL, FPLD	(4,5,7,9,13,17,20,21,69)
Reproductive dysfunction (PCOS, oligomenorrhea, reduced fertility, hirsutism, preeclampsia, miscarriage, macrosomia)	AGL, CGL, FPLD	(4,5,7,10,14,20,55 112)
Non-alcoholic fatty liver disease (ranging from simple steatosis to cirrhosis)	AGL, CGL, FPLD, ±APL	(4,7,10,17,19,49,51,69 113)
Renal dysfunction (proteinuria, MPGN, FSGS, diabetic nephropathy)	AGL, CGL, FPLD, APL	(17,34 114)
Heart disease (hypertension, cardiomyopathy, arrhythmias, conduction abnormalities, CAD)	AGL, CGL, FPLD	(3–5,9,13,15,25)
Autoimmune disease	AGL, APL	(4,10,17,19,20)

AGL, acquired generalized lipodystrophy; APL, acquired partial lipodystrophy; CAD, coronary artery disease; CGL, congenital generalized lipodystrophy; FPLD, familial partial lipodystrophy; MPGN, membranoproliferative glomerulonephritis; FSGS, focal segmental glomerulosclerosis; PCOS, polycystic ovary syndrome

Many of these features are also found in other forms of lipodystrophy, including progeroid disorders.

patients with partial lipodystrophy through clinical trials, compassionate use programs, and in Japan.

### Side effects of meterleptin

Approximately 30% of patients experience side effects (47). The most clinically important are hypoglycemia (in patients receiving concomitant insulin) and infrequent injection-site reactions (erythema, urticaria).

In vivo neutralizing antibody activity to leptin has been reported (58, 59). The clinical implications remain unclear, but may include treatment failure and sepsis (59). Additional serious adverse events occurring during meterleptin treatment are likely related to the underlying lipodystrophy syndrome, rather than meterleptin. These include T-cell lymphoma in patients with AGL (35), pancreatitis (47), and worsening of liver (47) and kidney (34) disease.

### Additional treatments for specific comorbidities

#### Diabetes

**Metformin is a first-line agent for diabetes and insulin resistance (Class IIa, Level C)**

**Insulin is effective for hyperglycemia. In some patients, concentrated preparations and high-doses may be required. (Class IIa, Level C)**

**Thiazolidinediones may improve metabolic complications in partial lipodystrophy, but should be used only with caution in generalized lipodystrophy. (Class IIb, Level B)**

Among the oral hypoglycemic agents, metformin is used most frequently. In patients with partial lipodystrophy, thiazolidinediones improved HbA1c, triglycerides, hepatic volume and steatosis, but may increase regional fat excess (Supplemental Table 5) (60, 61). In patients with high insulin requirements, concentrated insulins should be considered (62). Insulin glargine and degludec kinetics may be altered when injected in lipodystrophic areas, as their long duration of action requires subcutaneous fat (63, 64). Patients with generalized lipodystrophy may have to take insulin by intramuscular (IM) routes for lack of subcutaneous fat. Many other hypoglycemic agents have been used in lipodystrophy, but their efficacy has not been studied.

#### Dyslipidemia

**Statins should be used concomitantly with lifestyle modification (after consideration of age, reproductive status, and tolerance). (Class 1, Level C)**

**Fibrates and/or long-chain omega-3 fatty acids should be used for triglycerides > 500 mg/dl, and may be considered for triglycerides > 200 mg/dL (Class IIb, Level C)**

Lipids should be managed in accordance with US and European guidelines for the general population, with statins as first-line therapy (65–67). Statins and fibrates should be used with caution due to increased risk of myopathy, especially in the presence of known myositis or muscular dystrophy (MD) (68). Because cardiovascular risk may be enhanced in lipodystrophic syndromes independent of other risk factors, clinicians may consider applying stricter lipid targets (eg, LDL-cholesterol < 100 mg/dl, non-HDL-cholesterol < 130 mg/dL, triglycerides < 200 mg/dL) even in patients without diabetes. In addition to diet, fibrates and long-chain omega-3-fatty acids from fish oils have wide clinical use to avoid acute complications of severe hypertriglyceridemia (46), but have not been formally studied. Plasmapheresis has been used in extreme hypertriglyceridemia, but must be repeated frequently (69). Additional lipid-lowering drugs have not been studied in patients with lipodystrophy.

#### Hypertension

**Angiotensin converting enzyme (ACE)-inhibitors or angiotensin receptor blockers (ARB) are first-line treat-**

**Table 3.** Clinical Features that Increase the Suspicion of Lipodystrophy<sup>1</sup>

#### Essential feature

Generalized or regional absence of body fat

#### Physical Features

Failure to thrive (infants and children)  
Prominent muscles  
Prominent veins (phlebomegaly)  
Severe acanthosis nigricans  
Eruptive xanthomata  
Cushingoid appearance  
Acromegaloid appearance  
Progeroid (premature aging) appearance

#### Comorbid Conditions

Diabetes mellitus with high insulin requirements  
≥200 U/day  
≥2 U/kg/day  
Requiring U-500 insulin  
Severe hypertriglyceridemia  
≥500 mg/dL with or without therapy  
≥250 mg/dL despite diet and medical therapy  
History of acute pancreatitis secondary to hypertriglyceridemia  
Non-alcoholic steatohepatitis in a non-obese individual  
Early-onset cardiomyopathy  
Polycystic Ovarian Syndrome

#### Other Historical Clues

Autosomal dominant or recessive pattern of similar physical features or metabolic complications  
Significant hyperphagia (may manifest as irritability/aggression in infants/children)

<sup>1</sup>Adapted from (18)



**ments for hypertension in patients with diabetes.** (Class IIa, Level C)

As in other patients with diabetes, ACE-inhibitors or ARBs should be used for hypertension (70).

### **Liver disease**

Cholic acid did not reduce hepatic steatosis in patients with FPLD in a double-blind, placebo-controlled crossover study (71). In NAFLD not associated with lipodystrophy, diet and exercise are first-line treatments (72), and among pharmacologic treatments, vitamin E (in children and adults) (73, 74) and pioglitazone (in adults) (73, 75) have shown the most consistent benefit for liver histopathology. However, these treatments have not been studied in patients with lipodystrophy and are not approved for NAFLD.

### **Cosmetic treatment**

**Patients should be assessed for distress related to lipodystrophy, and referred as necessary to mental health professionals and/or plastic surgeons.** (Class IIa, Level C)

Changes in physical appearance from lipodystrophy can cause psychological distress and physical discomfort (eg, from absent fat pads in feet or buttocks). Data regarding cosmetic surgery are limited. For facial lipoatrophy, autologous fat transfer (in APL), dermal fillers (7, 76), or muscle grafts (77) may be used. Excess fat from the head, neck, or vulva may be surgically reduced or ameliorated by liposuction (7). Breast implants are helpful in some women (78, 79). Acanthosis nigricans is improved through successful treatment of insulin resistance (80, 81). Management of hirsutism is reviewed elsewhere (82).

### **Contraception and hormone replacement therapy**

**Oral estrogens are contraindicated.** (Class IIa, Level C)

**If contraception is needed, progestin-only or nonhormonal contraceptives should be considered.** (Class IIa, Level C)

**If estrogen replacement is needed, transdermal estrogen should be used.** (Class IIa, Level C)

Oral estrogens are contraindicated in lipodystrophy syndromes due to risk of severe hypertriglyceridemia and acute pancreatitis. Transdermal estrogens may be safer due to lesser hepatic exposure (83). There is clinical experience in the safe use of oral progestins and progestin containing intrauterine devices.

### **Pregnancy**

**Pregnant patients should receive prenatal care from an obstetrician experienced in managing diabetes, and a**

**physician experienced in managing lipodystrophy.** (Class IIa, level C)

**Should a patient become pregnant while taking meterleptin, clinicians may consider continuing meterleptin if withdrawal would harm the mother and fetus, and the patient understands that effects of meterleptin in pregnancy are unknown (FDA category C), and wishes to continue.** (Class IIc, level C)

In patients with lipodystrophy with extreme insulin resistance, worsening insulin resistance during pregnancy may make diabetes management difficult, with attendant fetal risks. Furthermore, meterleptin withdrawal has been associated with rebound hypertriglyceridemia (41), placing patients at risk for pancreatitis, endangering both mother and fetus.

### **Conclusions**

Lipodystrophy syndromes are heterogeneous with diverse pathophysiology. For diagnosis, clinical recognition and physical examination are critical. In management efforts, attention should be paid to metabolic derangements, and to many other facets of these syndromes affecting multiple organs, and quality of life (QOL).

### **Acknowledgments**

This work was generously supported by an educational grant from AstraZeneca. We thank the staff of the Pediatric Endocrine Society for their help in sponsoring and organizing this practice guideline, the patients from around the world whose contributions to research allowed the development of these guidelines, and Elaine Cochran for providing the guideline for meterleptin dosing.

Address all correspondence and requests for reprints to: Corresponding Author and Reprint Requests: Rebecca J. Brown, MD, MHSc, National Institute of Diabetes and Digestive and Kidney Diseases, National Institutes of Health, Building 10-CRC, Room 6-5942, 10 Center Drive, Bethesda, MD, 20892, Phone: 301-594-0609, Fax: 301-480-3675, Email: brownrebecca@nidk.nih.gov.

Endorsing Societies: 1. Pediatric Endocrine Society, 2. American Diabetes Association, 3. American Association of Clinical Endocrinologists, 4. Endocrine Society, 5. Japanese Society for Pediatric Endocrinology, 6. Australasian Pediatric Endocrine Group, 7. European Society for Pediatric Endocrinology, 8. Asia Pacific Pediatric Endocrine Society, 9. African Society for Pediatric and Adolescent Endocrinology, 10. International Society for Pediatric and Adolescent Diabetes

Abbreviated title: Diagnosis and Management of Lipodystrophy

Disclosures: RJB, PTC, MJ, LM, NP, KR, JvS, ES, TS, MW, and TY have nothing to declare. AG consults for Aegerion Phar-

maceuticals, Ionis, and Amgen, previously consulted for Bio-medical Insights, Clearview Healthcare, Gerson Lehrman, and Smithsolve, and received grant support from Aegerion Pharmaceuticals, Pfizer (2013–2016), and Ionis Pharmaceuticals (2015–2017). DA-V has consulted for Bristol-Myers Squibb and AstraZeneca. EAO received past grant/drug support from Bristol-Myers Squibb, AstraZeneca, and Amylin Pharmaceuticals, current research/drug support from Aegerion Pharmaceuticals, and Ionis Pharmaceuticals, previously consulted for all of the previously listed companies, and is a current consultant to AstraZeneca, Aegerion and Ionis Pharmaceuticals. CV has consulted for AstraZeneca and Aegerion Pharmaceuticals.

This work was supported by Grant and Fellowship Support: This practice guideline was sponsored and organized by the Pediatric Endocrine Society via an unrestricted education grant from AstraZeneca. Individual authors were supported by the intramural research program of the National Institute of Diabetes and Digestive and Kidney Diseases, NIH grants RO1-DK088114, RO1-DK105448, RO1-DK101941, the Sopha Fund for Lipodystrophy Research at the University of Michigan, and grant 14–35-00 026 of the Russian Science Foundation.

## References

- Brown RJ, Gorden P. Leptin Therapy in Patients with Lipodystrophy and Syndromic Insulin Resistance. In: Dagogo-Jack S, ed. *Leptin: Regulation and Clinical Applications*. Switzerland: Springer International Publishing; 2015.
- Bjornstad PG, Semb BK, Trygstad O, Seip M. Echocardiographic assessment of cardiac function and morphology in patients with generalised lipodystrophy. *European journal of pediatrics*. 1985; 144:355–359.
- Lupsa BC, Sachdev V, Lungu AO, Rosing DR, Gorden P. Cardiomyopathy in congenital and acquired generalized lipodystrophy: a clinical assessment. *Medicine (Baltimore)*. 2010;89:245–250.
- Misra A, Garg A. Clinical features and metabolic derangements in acquired generalized lipodystrophy: case reports and review of the literature. *Medicine (Baltimore)*. 2003;82:129–146.
- Jackson SN, Howlett TA, McNally PG, O'Rahilly S, Trembath RC. Dunnigan-Kobberling syndrome: an autosomal dominant form of partial lipodystrophy. *QJM: monthly journal of the Association of Physicians*. 1997;90:27–36.
- Seip M. Generalized lipodystrophy. In: Frick P vHG, Miller AF, Prader A, Schoen R, Wolf HP (eds), ed. *Ergeb Inn Med Kinderheilkd*: Springer Berlin; 1971:59–95.
- Garg A. Clinical review#: Lipodystrophies: genetic and acquired body fat disorders. *J Clin Endocrinol Metab*. 2011;96:3313–3325.
- Gibbons RJ, Smith S, Antman E, American College of C, American Heart A. American College of Cardiology/American Heart Association clinical practice guidelines: Part I: where do they come from? *Circulation*. 2003;107:2979–2986.
- Agarwal AK, Simha V, Oral EA, Moran SA, Gorden P, O'Rahilly S, Zaidi Z, Gurakan F, Arslanian SA, Klar A, Ricker A, White NH, Bindl L, Herbst K, Kennel K, Patel SB, Al-Gazali L, Garg A. Phenotypic and genetic heterogeneity in congenital generalized lipodystrophy. *J Clin Endocrinol Metab*. 2003;88:4840–4847.
- Garg A. Acquired and inherited lipodystrophies. *N Engl J Med*. 2004;350:1220–1234.
- Hayashi YK, Matsuda C, Ogawa M, Goto K, Tominaga K, Mitsuhashi S, Park YE, Nonaka I, Hino-Fukuyo N, Haginoya K, Sugano H, Nishino I. Human PTRF mutations cause secondary deficiency of caveolins resulting in muscular dystrophy with generalized lipodystrophy. *J Clin Invest*. 2009;119:2623–2633.
- Simha V, Garg A. Phenotypic heterogeneity in body fat distribution in patients with congenital generalized lipodystrophy caused by mutations in the AGPAT2 or seipin genes. *J Clin Endocrinol Metab*. 2003;88:5433–5437.
- Van Maldergem L, Magre J, Khalouf TE, Gedde-Dahl T, Jr., Delpeine M, Trygstad O, Seemanova E, Stephenson T, Albott CS, Bonnici F, Panz VR, Medina JL, Bogalho P, Huet F, Savasta S, Verloes A, Robert JJ, Loret H, De Kerdanet M, Tubiana-Rufi N, Megarbane A, Maassen J, Polak M, Lacombe D, Kahn CR, Silveira EL, D'Abronzio FH, Grigorescu F, Lathrop M, Capeau J, O'Rahilly S. Genotype-phenotype relationships in Berardinelli-Seip congenital lipodystrophy. *J Med Genet*. 2002;39:722–733.
- Vantyghem MC, Vincent-Desplanques D, Defrance-Faivre F, Capeau J, Fermon C, Valat AS, Lascols O, Hecart AC, Pigny P, Delemer B, Vigouroux C, Wemeau JL. Fertility and obstetrical complications in women with LMNA-related familial partial lipodystrophy. *J Clin Endocrinol Metab*. 2008;93:2223–2229.
- Hegele RA. Premature atherosclerosis associated with monogenic insulin resistance. *Circulation*. 2001;103:2225–2229.
- Savage DB, Semple RK, Clatworthy MR, Lyons PA, Morgan BP, Cochran EK, Gorden P, Raymond-Barker P, Murgatroyd PR, Adams C, Scobie I, Mufti GJ, Alexander GJ, Thiru S, Murano I, Cinti S, Chaudhry AN, Smith KG, O'Rahilly S. Complement abnormalities in acquired lipodystrophy revisited. *J Clin Endocrinol Metab*. 2009;94:10–16.
- Misra A, Peethambaram A, Garg A. Clinical features and metabolic and autoimmune derangements in acquired partial lipodystrophy: report of 35 cases and review of the literature. *Medicine (Baltimore)*. 2004;83:18–34.
- Handelsman Y, Oral EA, Bloomgarden ZT, Brown RJ, Chan JL, Einhorn D, Garber AJ, Garg A, Garvey WT, Grunberger G, Henry RR, Lavin N, Tapiador CD, Weyer C. The clinical approach to the detection of lipodystrophy - an aace consensus statement. *Endocrine practice: official journal of the American College of Endocrinology and the American Association of Clinical Endocrinologists*. 2013; 19:107–116.
- Safar Zadeh E, Lungu AO, Cochran EK, Brown RJ, Ghany MG, Heller T, Kleiner DE, Gorden P. The liver diseases of lipodystrophy: the long-term effect of leptin treatment. *J Hepatol*. 2013;59:131–137.
- Pope E, Janson A, Khambalia A, Feldman B. Childhood acquired lipodystrophy: a retrospective study. *J Am Acad Dermatol*. 2006; 55:947–950.
- Garg A. Gender differences in the prevalence of metabolic complications in familial partial lipodystrophy (Dunnigan variety). *J Clin Endocrinol Metab*. 2000;85:1776–1782.
- Savage DB, Soos MA, Powelson A, O'Rahilly S, McFarlane I, Halsall DJ, Barroso I, Thomas EL, Bell JD, Scobie I, Belchetz PE, Kelly WF, Schafer AJ. Familial partial lipodystrophy associated with compound heterozygosity for novel mutations in the LMNA gene. *Diabetologia*. 2004;47:753–756.
- Decaudain A, Vantyghem MC, Guerci B, Hecart AC, Auclair M, Reznik Y, Narbonne H, Ducluzeau PH, Donadille B, Lebbe C, Berziat V, Capeau J, Lascols O, Vigouroux C. New metabolic phenotypes in laminopathies: LMNA mutations in patients with severe metabolic syndrome. *J Clin Endocrinol Metab*. 2007;92:4835–4844.
- Park JY, Chong AY, Cochran EK, Kleiner DE, Haller MJ, Schatz DA, Gorden P. Type 1 diabetes associated with acquired generalized lipodystrophy and insulin resistance: the effect of long-term leptin therapy. *J Clin Endocrinol Metab*. 2008;93:26–31.
- Brown RJ, Meehan CA, Gorden P. Leptin Does Not Mediate Hypertension Associated With Human Obesity. *Cell*. 2015;162:465–466.
- Ben Turkia H, Tebib N, Azzouz H, Abdelmoula MS, Ben Chehida A, Hubert P, Douira W, Ben Dridi MF. [Congenital generalized lipodystrophy: a case report with neurological involvement]. *Archives de pediatrie: organe officiel de la Societe francaise de pediatrie*. 2009;16:27–31.

27. Debray FG, Baguette C, Colinet S, Van Maldergem L, Verellen-Dumouin C. Early infantile cardiomyopathy and liver disease: a multisystemic disorder caused by congenital lipodystrophy. *Molecular genetics and metabolism*. 2013;109:227–229.
28. Araujo-Vilar D, Lado-Abéal J, Palos-Paz F, Lattanzi G, Bandin MA, Bellido D, Dominguez-Gerpe L, Calvo C, Perez O, Ramazanov A, Martinez-Sanchez N, Victoria B, Costa-Freitas AT. A novel phenotypic expression associated with a new mutation in LMNA gene, characterized by partial lipodystrophy, insulin resistance, aortic stenosis and hypertrophic cardiomyopathy. *Clin Endocrinol (Oxf)*. 2008;69:61–68.
29. Bhayana S, Siu VM, Joubert GI, Clarson CL, Cao H, Hegele RA. Cardiomyopathy in congenital complete lipodystrophy. *Clinical genetics*. 2002;61:283–287.
30. Caux F, Dubosclard E, Lascols O, Buendia B, Chazouilleres O, Cohen A, Courvalin JC, Laroche L, Capeau J, Vigouroux C, Christin-Maitre S. A new clinical condition linked to a novel mutation in lamins A and C with generalized lipodystrophy, insulin-resistant diabetes, disseminated leukomelanodermic papules, liver steatosis, and cardiomyopathy. *J Clin Endocrinol Metab*. 2003;88:1006–1013.
31. Khalife WI, Mourtada MC, Khalil J. Dilated cardiomyopathy and myocardial infarction secondary to congenital generalized lipodystrophy. *Texas Heart Institute journal / from the Texas Heart Institute of St Luke's Episcopal Hospital, TX Children's Hospital*. 2008; 35:196–199.
32. Rheuban KS, Blizzard RM, Parker MA, Carter T, Wilson T, Gutsell HP. Hypertrophic cardiomyopathy in total lipodystrophy. *The Journal of pediatrics*. 1986;109:301–302.
33. Andre P, Schneebeli S, Vigouroux C, Lascols O, Schaaf M, Chevalier P. Metabolic and cardiac phenotype characterization in 37 atypical Dunnigan patients with nonfarnesylated mutated prelamin A. *American heart journal*. 2015;169:587–593.
34. Javor ED, Moran SA, Young JR, Cochran EK, DePaoli AM, Oral EA, Turman MA, Blackett PR, Savage DB, O'Rahilly S, Balow JE, Gorden P. Proteinuric nephropathy in acquired and congenital generalized lipodystrophy: baseline characteristics and course during recombinant leptin therapy. *J Clin Endocrinol Metab*. 2004;89: 3199–3207.
35. Brown RJ, Chan JL, Jaffe ES, Cochran E, DePaoli AM, Gautier JF, Goujard C, Vigouroux C, Gorden P. Lymphoma in acquired generalized lipodystrophy. *Leukemia, lymphoma*. 2015;1–6.
36. Patni N, Alves C, von Schnurbein J, Wabitsch M, Tannin G, Rakheja D, Garg A. A novel syndrome of generalized lipodystrophy associated with pilocytic astrocytoma. *J Clin Endocrinol Metab*. 2015; jc20152476.
37. Robbins DC, Danforth E, Jr., Horton ES, Burse RL, Goldman RF, Sims EA. The effect of diet on thermogenesis in acquired lipodystrophy. *Metabolism*. 1979;28:908–916.
38. Glueck CJ, Mellies MJ, Tsang RC, Kashyap ML, Steiner PM. Familial hypertriglyceridemia in children: dietary management. *Pediatric research*. 1977;11:953–957.
39. Wilson DE, Chan IF, Stevenson KB, Horton SC, Schipke C. Eucaloric substitution of medium chain triglycerides for dietary long chain fatty acids in acquired total lipodystrophy: effects on hyperlipoproteinemia and endogenous insulin resistance. *J Clin Endocrinol Metab*. 1983;57:517–523.
40. Meehan CA, Cochran E, Kassai A, Brown RJ, Gorden P. Metreleptin for injection to treat the complications of leptin deficiency in patients with congenital or acquired generalized lipodystrophy. *Expert review of clinical pharmacology*. 2016;9:59–68.
41. Oral EA, Simha V, Ruiz E, Andewelt A, Premkumar A, Snell P, Wagner AJ, DePaoli AM, Reitman ML, Taylor SI, Gorden P, Garg A. Leptin-replacement therapy for lipodystrophy. *N Engl J Med*. 2002;346:570–578.
42. Ebihara K, Kusakabe T, Hirata M, Masuzaki H, Miyanaga F, Kobayashi N, Tanaka T, Chusho H, Miyazawa T, Hayashi T, Hosoda K, Ogawa Y, DePaoli AM, Fukushima M, Nakao K. Efficacy and safety of leptin-replacement therapy and possible mechanisms of leptin actions in patients with generalized lipodystrophy. *J Clin Endocrinol Metab*. 2007;92:532–541.
43. Moran SA, Patten N, Young JR, Cochran E, Sebring N, Reynolds J, Premkumar A, Depaoli AM, Skarulis MC, Oral EA, Gorden P. Changes in body composition in patients with severe lipodystrophy after leptin replacement therapy. *Metabolism*. 2004;53:513–519.
44. McDuffie JR, Riggs PA, Calis KA, Freedman RJ, Oral EA, DePaoli AM, Yanovski JA. Effects of exogenous leptin on satiety and satiation in patients with lipodystrophy and leptin insufficiency. *J Clin Endocrinol Metab*. 2004;89:4258–4263.
45. Musso C, Cochran E, Javor E, Young J, Depaoli AM, Gorden P. The long-term effect of recombinant methionyl human leptin therapy on hyperandrogenism and menstrual function in female and pituitary function in male and female hypoleptinemic lipodystrophic patients. *Metabolism*. 2005;54:255–263.
46. Diker-Cohen T, Cochran E, Gorden P, Brown RJ. Partial and generalized lipodystrophy: comparison of baseline characteristics and response to metreleptin. *J Clin Endocrinol Metab*. 2015;100:1802–1810.
47. Chan JL, Lutz K, Cochran E, Huang W, Peters Y, Weyer C, Gorden P. Clinical effects of long-term metreleptin treatment in patients with lipodystrophy. *Endocr Pract*. 2011;17:922–932.
48. Chong AY, Lupsa BC, Cochran EK, Gorden P. Efficacy of leptin therapy in the different forms of human lipodystrophy. *Diabetologia*. 2010;53:27–35.
49. Javor ED, Ghany MG, Cochran EK, Oral EA, DePaoli AM, Premkumar A, Kleiner DE, Gorden P. Leptin reverses nonalcoholic steatohepatitis in patients with severe lipodystrophy. *Hepatology*. 2005;41:753–760.
50. Simha V, Szczepaniak LS, Wagner AJ, DePaoli AM, Garg A. Effect of leptin replacement on intrahepatic and intramyocellular lipid content in patients with generalized lipodystrophy. *Diabetes Care*. 2003;26:30–35.
51. Petersen KF, Oral EA, Dufour S, Befroy D, Ariyan C, Yu C, Cline GW, DePaoli AM, Taylor SI, Gorden P, Shulman GI. Leptin reverses insulin resistance and hepatic steatosis in patients with severe lipodystrophy. *J Clin Invest*. 2002;109:1345–1350.
52. Casey SP, Lokan J, Testro A, Farquharson S, Connelly A, Proietto J, Angus PW. Post-liver transplant leptin results in resolution of severe recurrence of lipodystrophy-associated nonalcoholic steatohepatitis. *American journal of transplantation : official journal of the American Society of Transplantation and the American Society of Transplant Surgeons*. 2013;13:3031–3034.
53. Oral EA, Ruiz E, Andewelt A, Sebring N, Wagner AJ, Depaoli AM, Gorden P. Effect of leptin replacement on pituitary hormone regulation in patients with severe lipodystrophy. *J Clin Endocrinol Metab*. 2002;87:3110–3117.
54. Abel BS, Muniyappa R, Stratton P, Skarulis MC, Gorden P, Brown RJ. Effects of Recombinant Human Leptin (Metreleptin) on Nocturnal LH Secretion in Lipodystrophy Patients. *Neuroendocrinology*. 2015;
55. Lungu AO, Zadeh ES, Goodling A, Cochran E, Gorden P. Insulin resistance is a sufficient basis for hyperandrogenism in lipodystrophic women with polycystic ovarian syndrome. *J Clin Endocrinol Metab*. 2012;97:563–567.
56. Vatier C, Fetita S, Boudou P, Tchankou C, Deville L, Riveline J, Young J, Mathivon L, Travert F, Morin D, Cahen J, Lascols O, Andreelli F, Reznik Y, Mongeois E, Madelaine I, Vantyghem M, Gautier J, Vigouroux C. One-year metreleptin treatment improves insulin secretion in patients with diabetes linked to genetic lipodystrophic syndromes. *Diabetes, obesity, metabolism*. 2015;
57. Simha V, Subramanyam L, Szczepaniak L, Quittner C, Adams-Huet B, Snell P, Garg A. Comparison of efficacy and safety of leptin replacement therapy in moderately and severely hypoleptinemic patients with familial partial lipodystrophy of the Dunnigan variety. *J Clin Endocrinol Metab*. 2012;97:785–792.
58. Beltrand J, Lahlou N, Le Charpentier T, Sebag G, Leka S, Polak M,

- Tubiana-Rufi N, Lacombe D, de Kerdanet M, Huet F, Robert JJ, Chevenne D, Gressens P, Levy-Marchal C. Resistance to leptin-replacement therapy in Berardinelli-Seip congenital lipodystrophy: an immunological origin. *Eur J Endocrinol*. 2010;162:1083–1091.
59. Chan JL, Koda J, Heilig JS, Cochran EK, Gorden P, Oral EA, Brown RJ. Immunogenicity associated with metreleptin treatment in patients with obesity or lipodystrophy. *Clin Endocrinol (Oxf)*. 2015;
  60. Arioglu E, Duncan-Morin J, Sebring N, Rother KI, Gottlieb N, Lieberman J, Herion D, Kleiner DE, Reynolds J, Premkumar A, Sumner AE, Hoofnagle J, Reitman ML, Taylor SI. Efficacy and safety of troglitazone in the treatment of lipodystrophy syndromes. *Ann Intern Med*. 2000;133:263–274.
  61. Luedtke A, Boschmann M, Colpe C, Engeli S, Adams F, Birkenfeld AL, Haufe S, Rahn G, Luft FC, Schmidt HH, Jordan J. Thiazolidinedione response in familial lipodystrophy patients with LMNA mutations: a case series. *Hormon- und Stoffwechselforschung = Hormones et metabolisme*. 2012;44:306–311.
  62. Lane WS, Cochran EK, Jackson JA, Scism-Bacon JL, Corey IB, Hirsch IB, Skyler JS. High-dose insulin therapy: is it time for U-500 insulin? *Endocrine practice : official journal of the American College of Endocrinology and the American Association of Clinical Endocrinologists*. 2009;15:71–79.
  63. Karges B, Boehm BO, Karges W. Early hypoglycaemia after accidental intramuscular injection of insulin glargine. *Diabet Med*. 2005;22:1444–1445.
  64. Bolli GB, Owens DR. Insulin glargine. *Lancet*. 2000;356:443–445.
  65. Stone NJ, Robinson JG, Lichtenstein AH, Bairey Merz CN, Blum CB, Eckel RH, Goldberg AC, Gordon D, Levy D, Lloyd-Jones DM, McBride P, Schwartz JS, Shero ST, Smith SC, Jr., Watson K, Wilson PW, American College of Cardiology/American Heart Association Task Force on Practice G. 2013 ACC/AHA guideline on the treatment of blood cholesterol to reduce atherosclerotic cardiovascular risk in adults: a report of the American College of Cardiology/American Heart Association Task Force on Practice Guidelines. *J Am Coll Cardiol*. 2014;63:2889–2934.
  66. Catapano AL, Chapman J, Wiklund O, Taskinen MR. The new joint EAS/ESC guidelines for the management of dyslipidaemias. *Atherosclerosis*. 2011;217:1.
  67. Jellinger PS, Smith DA, Mehta AE, Ganda O, Handelsman Y, Rodbard HW, Shepherd MD, Seibel JA. Dyslipidemia ATFFMo, Prevention of A. American Association of Clinical Endocrinologists' Guidelines for Management of Dyslipidemia and Prevention of Atherosclerosis. *Endocrine practice : official journal of the American College of Endocrinology and the American Association of Clinical Endocrinologists*. 2012;18 Suppl 1:1–78.
  68. Settergren J, Eiermann B, Mannheimer B. Adherence to drug label recommendations for avoiding drug interactions causing statin-induced myopathy—a nationwide register study. *PLoS one*. 2013;8:e69545.
  69. Bolan C, Oral EA, Gorden P, Taylor S, Leitman SF. Intensive, long-term plasma exchange therapy for severe hypertriglyceridemia in acquired generalized lipodystrophy. *J Clin Endocrinol Metab*. 2002;87:380–384.
  70. American Diabetes A. Standards of Medical Care in Diabetes-2016 Abridged for Primary Care Providers. *Clinical diabetes : a publication of the American Diabetes Association*. 2016;34:3–21.
  71. Ahmad Z, Subramanyam L, Szczepaniak L, Simha V, Adams-Huet B, Garg A. Cholic acid for hepatic steatosis in patients with lipodystrophy: a randomized, controlled trial. *Eur J Endocrinol*. 2013;168:771–778.
  72. Mitchel EB, Lavine JE. Review article: the management of paediatric nonalcoholic fatty liver disease. *Alimentary pharmacology, therapeutics*. 2014;40:1155–1170.
  73. Sanyal AJ, Chalasani N, Kowdley KV, McCullough A, Diehl AM, Bass NM, Neuschwander-Tetri BA, Lavine JE, Tonascia J, Unalp A, Van Natta M, Clark J, Brunt EM, Kleiner DE, Hoofnagle JH, Rock PR, Nash CRN. Pioglitazone, vitamin E, or placebo for non-alcoholic steatohepatitis. *N Engl J Med*. 2010;362:1675–1685.
  74. Lavine JE, Schwimmer JB, Van Natta ML, Molleston JP, Murray KF, Rosenthal P, Abrams SH, Scheimann AO, Sanyal AJ, Chalasani N, Tonascia J, Unalp A, Clark JM, Brunt EM, Kleiner DE, Hoofnagle JH, Rock PR, Nonalcoholic Steatohepatitis Clinical Research N. Effect of vitamin E or metformin for treatment of non-alcoholic fatty liver disease in children and adolescents: the TONIC randomized controlled trial. *Jama*. 2011;305:1659–1668.
  75. Boettcher E, Csako G, Pucino F, Wesley R, Loomba R. Meta-analysis: pioglitazone improves liver histology and fibrosis in patients with non-alcoholic steatohepatitis. *Alimentary pharmacology, therapeutics*. 2012;35:66–75.
  76. Graivier MH, Bass LS, Busso M, Jasin ME, Narins RS, Tzikas TL. Calcium hydroxylapatite (Radiess) for correction of the mid- and lower face: consensus recommendations. *Plastic and reconstructive surgery*. 2007;120:55S–66S
  77. Hurwitz PJ, Sarel R. Facial reconstruction in partial lipodystrophy. *Ann Plast Surg*. 1982;8:253–257.
  78. Calderoni DR, Ramos TM, de Castro JR, Kharmandayan P. Surgical management of phenotypic alterations related to the Dunnigan variety of familial partial lipodystrophy. *Journal of plastic, reconstructive, aesthetic surgery : JPRAS*. 2011;64:1248–1250.
  79. Hughes JM, Stephen C, Johnson AB, Wilson S. Breast augmentation in Familial Partial Lipodystrophy: a case report. *Journal of plastic, reconstructive, aesthetic surgery : JPRAS*. 2011;64:e121–124.
  80. Araujo-Vilar D, Sanchez-Iglesias S, Guillen-Amarelle C, Castro A, Lage M, Pazos M, Rial JM, Blasco J, Guillen-Navarro E, Domingo-Jimenez R, del Campo MR, Gonzalez-Mendez B, Casanueva FF. Recombinant human leptin treatment in genetic lipodystrophic syndromes: the long-term Spanish experience. *Endocrine*. 2015;49:139–147.
  81. Eberting CL, Javor E, Gorden P, Turner ML, Cowen EW. Insulin resistance, acanthosis nigricans, and hypertriglyceridemia. *J Am Acad Dermatol*. 2005;52:341–344.
  82. Loriaux DL. An approach to the patient with hirsutism. *J Clin Endocrinol Metab*. 2012;97:2957–2968.
  83. Walsh BW, Schiff I, Rosner B, Greenberg L, Ravnkar V, Sacks FM. Effects of postmenopausal estrogen replacement on the concentrations and metabolism of plasma lipoproteins. *N Engl J Med*. 1991;325:1196–1204.
  84. Agarwal AK, Arioglu E, De Almeida S, Akkoc N, Taylor SI, Bowcock AM, Barnes RI, Garg A. AGPAT2 is mutated in congenital generalized lipodystrophy linked to chromosome 9q34. *Nat Genet*. 2002;31:21–23.
  85. Magre J, Delépine M, Khallouf E, Gedde-Dahl T, Jr., Van Maldergem L, Sobel E, Papp J, Meier M, Megarbane A, Bachy A, Verloes A, d'Abronzo FH, Seemanova E, Assan R, Baudic N, Bourut C, Czernichow P, Huet F, Grigorescu F, de Kerdanet M, Lacombe D, Labruno P, Lanza M, Loret H, Matsuda F, Navarro J, Nivelon-Chevalier A, Polak M, Robert JJ, Tric P, Tubiana-Rufi N, Vigouroux C, Weissenbach J, Savasta S, Maassen JA, Trygstad O, Bogalho P, Freitas P, Medina JL, Bonnicci F, Joffe BI, Loyson G, Panz VR, Raal FJ, O'Rahilly S, Stephenson T, Kahn CR, Lathrop M, Capeau J, Group BW. Identification of the gene altered in Berardinelli-Seip congenital lipodystrophy on chromosome 11q13. *Nat Genet*. 2001;28:365–370.
  86. Kim CA, Delépine M, Boutet E, El Mourabit H, Le Lay S, Meier M, Nemani M, Bridel E, Leite CC, Bertola DR, Semple RK, O'Rahilly S, Dugail I, Capeau J, Lathrop M, Magre J. Association of a homozygous nonsense caveolin-1 mutation with Berardinelli-Seip congenital lipodystrophy. *J Clin Endocrinol Metab*. 2008;93:1129–1134.
  87. Payne F, Lim K, Girousse A, Brown RJ, Kory N, Robbins A, Xue Y, Sleight A, Cochran E, Adams C, Dev Borman A, Russel-Jones D, Gorden P, Semple RK, Saudek V, O'Rahilly S, Walther TC, Barroso I, Savage DB. Mutations disrupting the Kennedy phosphatidylcholine pathway in humans with congenital lipodystrophy and fatty

- liver disease. *Proceedings of the National Academy of Sciences of the United States of America*. 2014;111:8901–8906.
88. Dymant DA, Gibson WT, Huang L, Bassyouni H, Hegele RA, Innes AM. Biallelic mutations at PPARG cause a congenital, generalized lipodystrophy similar to the Berardinelli-Seip syndrome. *European journal of medical genetics*. 2014;57:524–526.
  89. Novelli G, Muchir A, Sangiuolo F, Helbling-Leclerc A, D'Apice MR, Massaro C, Capon F, Sbraccia P, Federici M, Lauro R, Tudisco C, Pallotta R, Scarano G, Dallapiccola B, Merlini L, Bonne G. Mandibuloacral dysplasia is caused by a mutation in LMNA-encoding lamin A/C. *American journal of human genetics*. 2002;71:426–431.
  90. Agarwal AK, Fryns JP, Auchus RJ, Garg A. Zinc metalloproteinase, ZMPSTE24, is mutated in mandibuloacral dysplasia. *Human molecular genetics*. 2003;12:1995–2001.
  91. Lessel D, Vaz B, Halder S, Lockhart PJ, Marinovic-Terzic I, Lopez-Mosqueda J, Philipp M, Sim JC, Smith KR, Oehler J, Cabrera E, Freire R, Pope K, Nahid A, Norris F, Leventer RJ, Delatycki MB, Barbi G, von Ameln S, Hogel J, Degoricija M, Fertig R, Burkhalter MD, Hofmann K, Thiele H, Altmuller J, Nurnberg G, Nurnberg P, Bahlo M, Martin GM, Aalfs CM, Oshima J, Terzic J, Amor DJ, Dikic I, Ramadan K, Kubisch C. Mutations in SPRTN cause early onset hepatocellular carcinoma, genomic instability and progeroid features. *Nat Genet*. 2014;46:1239–1244.
  92. Donadille B, D'Anella P, Auclair M, Uhrhammer N, Sorel M, Grigorescu R, Ouzounian S, Cambonie G, Boulot P, Laforet P, Carbone B, Christin-Maitre S, Bignon YJ, Vigouroux C. Partial lipodystrophy with severe insulin resistance and adult progeria Werner syndrome. *Orphanet journal of rare diseases*. 2013;8:106.
  93. Cabanillas R, Cadinanos J, Villameytide JA, Perez M, Longo J, Richard JM, Alvarez R, Duran NS, Illan R, Gonzalez DJ, Lopez-Otin C. Nestor-Guillermo progeria syndrome: a novel premature aging condition with early onset and chronic development caused by BANF1 mutations. *American journal of medical genetics Part A*. 2011;155A:2617–2625.
  94. Rubio-Cabezas O, Puri V, Murano I, Saudek V, Semple RK, Dash S, Hyden CS, Bottomley W, Vigouroux C, Magre J, Raymond-Barker P, Murgatroyd PR, Chawla A, Skepper JN, Chatterjee VK, Suliman P, Patch AM, Agarwal AK, Garg A, Barroso I, Cinti S, Czech MP, Argente J, O'Rahilly S, Savage DB, Consortium LDS. Partial lipodystrophy and insulin resistant diabetes in a patient with a homozygous nonsense mutation in CIDEC. *EMBO molecular medicine*. 2009;1:280–287.
  95. Albert JS, Yerges-Armstrong LM, Horenstein RB, Pollin TI, Sreenivasan UT, Chai S, Blaner WS, Snitker S, O'Connell JR, Gong DW, Breyer RJ, 3rd, Ryan AS, McLenithan JC, Shuldiner AR, Sztalryd C, Damcott CM. Null mutation in hormone-sensitive lipase gene and risk of type 2 diabetes. *N Engl J Med*. 2014;370:2307–2315.
  96. Farhan SM, Robinson JF, McIntyre AD, Marrosu MG, Ticca AF, Loddio S, Carboni N, Brancati F, Hegele RA. A novel LIPE nonsense mutation found using exome sequencing in siblings with late-onset familial partial lipodystrophy. *The Canadian journal of cardiology*. 2014;30:1649–1654.
  97. Agarwal AK, Xing C, DeMartino GN, Mizrachi D, Hernandez MD, Sousa AB, Martinez de Villarreal L, dos Santos HG, Garg A. PSMB8 encoding the beta5i proteasome subunit is mutated in joint contractures, muscle atrophy, microcytic anemia, and panniculitis-induced lipodystrophy syndrome. *American journal of human genetics*. 2010;87:866–872.
  98. Herbst KL, Tannock LR, Deeb SS, Purnell JQ, Brunzell JD, Chait A. Kobberling type of familial partial lipodystrophy: an underrecognized syndrome. *Diabetes Care*. 2003;26:1819–1824.
  99. Cao H, Hegele RA. Nuclear lamin A/C R482Q mutation in canadian kindreds with Dunnigan-type familial partial lipodystrophy. *Human molecular genetics*. 2000;9:109–112.
  100. Shackleton S, Lloyd DJ, Jackson SN, Evans R, Niermeijer MF, Singh BM, Schmidt H, Brabant G, Kumar S, Durrington PN, Gregory S, O'Rahilly S, Trembath RC. LMNA, encoding lamin A/C, is mutated in partial lipodystrophy. *Nat Genet*. 2000;24:153–156.
  101. Barroso I, Gurnell M, Crowley VE, Agostini M, Schwabe JW, Soos MA, Maslen GL, Williams TD, Lewis H, Schafer AJ, Chatterjee VK, O'Rahilly S. Dominant negative mutations in human PPARG-gamma associated with severe insulin resistance, diabetes mellitus and hypertension. *Nature*. 1999;402:880–883.
  102. George S, Rochford JJ, Wolfrum C, Gray SL, Schinner S, Wilson JC, Soos MA, Murgatroyd PR, Williams RM, Acerini CL, Dunger DB, Barford D, Umpleby AM, Wareham NJ, Davies HA, Schafer AJ, Stoffel M, O'Rahilly S, Barroso I. A family with severe insulin resistance and diabetes due to a mutation in AKT2. *Science*. 2004;304:1325–1328.
  103. Gandotra S, Le Dour C, Bottomley W, Cervera P, Giral P, Reznik Y, Charpentier G, Auclair M, Delepine M, Barroso I, Semple RK, Lathrop M, Lascols O, Capeau J, O'Rahilly S, Magre J, Savage DB, Vigouroux C. Perilipin deficiency and autosomal dominant partial lipodystrophy. *N Engl J Med*. 2011;364:740–748.
  104. Eriksson M, Brown WT, Gordon LB, Glynn MW, Singer J, Scott L, Erdos MR, Robbins CM, Moses TY, Berglund P, Dutra A, Pak E, Durkin S, Csoka AB, Boehnke M, Glover TW, Collins FS. Recurrent de novo point mutations in lamin A cause Hutchinson-Gilford progeria syndrome. *Nature*. 2003;423:293–298.
  105. De Sandre-Giovannoli A, Bernard R, Cau P, Navarro C, Amiel J, Boccaccio I, Lyonnet S, Stewart CL, Munnich A, Le Merrer M, Levy N. Lamin a truncation in Hutchinson-Gilford progeria. *Science*. 2003;300:2055.
  106. Graul-Neumann LM, Kienitz T, Robinson PN, Baasanjav S, Karow B, Gillessen-Kaesbach G, Fahsold R, Schmidt H, Hoffmann K, Passarge E. Marfan syndrome with neonatal progeroid syndrome-like lipodystrophy associated with a novel frameshift mutation at the 3' terminus of the FBN1-gene. *American journal of medical genetics Part A*. 2010;152A:2749–2755.
  107. Garg A, Kircher M, Del Campo M, Amato RS, Agarwal AK. University of Washington Center for Mendelian G. Whole exome sequencing identifies de novo heterozygous CAV1 mutations associated with a novel neonatal onset lipodystrophy syndrome. *American journal of medical genetics Part A*. 2015;167A:1796–1806.
  108. Weedon MN, Ellard S, Prindle MJ, Caswell R, Lango Allen H, Oram R, Godbole K, Yajnik CS, Sbraccia P, Novelli G, Turnpenny P, McCann E, Goh KJ, Wang Y, Fulford J, McCulloch LJ, Savage DB, O'Rahilly S, Kos K, Loeb LA, Semple RK, Hattersley AT. An in-frame deletion at the polymerase active site of POLD1 causes a multisystem disorder with lipodystrophy. *Nat Genet*. 2013;45:947–950.
  109. Masotti A, Uva P, Davis-Keppen L, Basel-Vanagaite L, Cohen L, Pisaneschi E, Celluzzi A, Bencivenga P, Fang M, Tian M, Xu X, Cappa M, Dallapiccola B. Keppen-Lubinsky syndrome is caused by mutations in the inwardly rectifying K<sup>+</sup> channel encoded by KCNJ6. *American journal of human genetics*. 2015;96:295–300.
  110. Thauvin-Robinet C, Auclair M, Duplomb L, Caron-Debarle M, Avila M, St-Onge J, Le Merrer M, Le Luyer B, Heron D, Mathieu-Dramard M, Bitoun P, Petit JM, Odent S, Amiel J, Picot D, Carmignac V, Thevenon J, Callier P, Laville M, Reznik Y, Fagour C, Nunes ML, Capeau J, Lascols O, Huet F, Faivre L, Vigouroux C, Riviere JB. PIK3R1 mutations cause syndromic insulin resistance with lipodystrophy. *American journal of human genetics*. 2013;93:141–149.
  111. Aotani D, Ebihara K, Sawamoto N, Kusakabe T, Aizawa-Abe M, Kataoka S, Sakai T, Iogawa H, Ebihara C, Fujikura J, Hosoda K, Fukuyama H, Nakao K. Functional magnetic resonance imaging analysis of food-related brain activity in patients with lipodystrophy undergoing leptin replacement therapy. *J Clin Endocrinol Metab*. 2012;97:3663–3671.
  112. Panchal R, Bosio P, Waugh J. Familial partial lipodystrophy complicated by pre-eclampsia. *J Obstet Gynaecol*. 2005;25:196–197.
  113. Ludtke A, Genschel J, Brabant G, Bauditz J, Taupitz M, Koch M,

Wermke W, Worman HJ, Schmidt HH. Hepatic steatosis in Dunningan-type familial partial lipodystrophy. *Am J Gastroenterol*. 2005;100:2218–2224.

114. Peters DK, Charlesworth JA, Sissons JG, Williams DG, Boulton-

Jones JM, Evans DJ, Kourilsky O, Morel-Maroger L. Mesangio-capillary nephritis, partial lipodystrophy, and hypocomplementaemia. *Lancet*. 1973;2:535–538.